

3hree 5ive

Nick Knepper/Eric Sorenson

Accents = *ff*
Taps = *mp*

♩ = 144

1 R... L... R... L... R...

ff

7 L... R... r... L... l...

ff mp *mp* *ff*

13 r... L r... r... l... r... L r... r... l... r L/r r r L r r r r... l...

mp

19 r L/r r r L r r r r... l... r r r r r L r r r r R/I I I R I I I I r r r r r L r r r r

24 r R/I I I R I I I I r r r r r L r r r r r R/I I I R I I I I r r r r r L r r r r r R/I I I R I I I I

29 R L/r r r L r r r R L/r r r L r r r L

fff

Triple Double

©2026

More Rolls

A ♩. = 150-190

Musical notation for the first staff of 'The Ballad of the Flag'. It is in 12/8 time, key of B-flat major (two flats), and consists of 12 measures. The first six measures are half notes: B-flat, B-flat, B-flat, B-flat, B-flat, B-flat. The next six measures are half notes: B-flat, B-flat, B-flat, B-flat, B-flat, B-flat. The final six measures are eighth notes: R, L, R, L, R, L, R, L, R, L, R, L.

[illegible][illegible][illegible]

The first staff of music is in 2/4 time. It begins with a C-clef on the first line. The melody consists of quarter notes: C4, D4, E4, F4, G4, A4, B4, A4, G4, F4, E4, D4, C4. There is a repeat sign after the eighth note (B4). The key signature has one sharp (F#4). The staff ends with a double bar line.

The first staff of music for 'The Rose Tree' is in 2/4 time. It begins with a double bar line and a key signature of one flat (B-flat). The melody consists of eighth and sixteenth notes. The lyrics 'The Rose Tree' are written below the staff, with each syllable aligned under a specific note or group of notes.

The first staff of music for 'The Rose Tree' is in 2/4 time. It begins with a treble clef and a key signature of one flat (B-flat). The melody consists of the following notes: G4 (quarter), A4 (quarter), Bb4 (quarter), A4 (quarter), G4 (quarter), F4 (quarter), E4 (quarter), D4 (half). This is followed by a repeat sign. The first ending of the repeat is: G4 (quarter), A4 (quarter), Bb4 (quarter), A4 (quarter), G4 (quarter), F4 (quarter), E4 (quarter), D4 (half). The second ending is: G4 (quarter), A4 (quarter), Bb4 (quarter), A4 (quarter), G4 (quarter), F4 (quarter), E4 (quarter), D4 (half). The staff ends with a double bar line.

The first staff of music is in 2/4 time, starting with a treble clef and a key signature of one flat (B-flat). The melody consists of eighth and quarter notes. The lyrics 'The Rose Tree' are written below the staff, with the first four notes ('The') aligned under the first measure and the remaining notes ('Tree') aligned under the second measure. The notes are: G4 (quarter), A4 (quarter), B4 (quarter), A4 (quarter), G4 (quarter), F4 (quarter), E4 (quarter), D4 (quarter), C4 (half). The lyrics are: 'The' (under G4), 'Rose' (under A4), 'Tree' (under B4), 'The' (under A4), 'Rose' (under G4), 'Tree' (under F4), 'The' (under E4), 'Rose' (under D4), 'Tree' (under C4).

Snareline

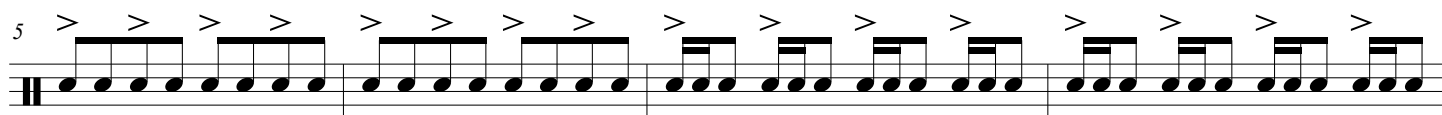
UA Paradiddles

Thomas Gonzalez

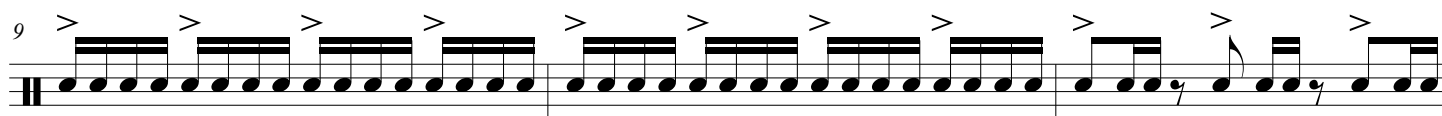
♩ = 170-200



R r L l R r L l R r L l R r L l R r r L l l R r r L l l R r r L l l R r r L l l



R r L l R r L l R r L l R r L l R l r L r l R l r L r l R l r L r l R l r L r l



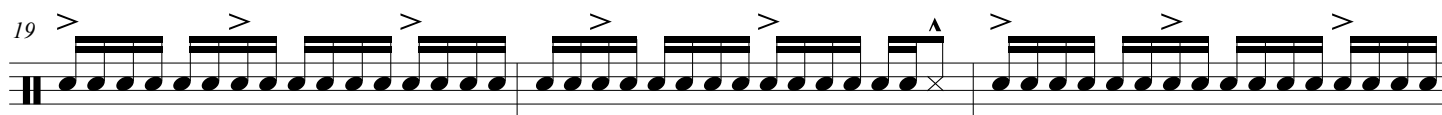
R l r r L r l l R l r r L r l l R l r r L r l l R l r r L r l l R r r R r r R r r



R r r R r r R L l l L l l L l l L l l L l l L R l r r l R l r r l R l r r



l R l r r l R l r r l R L r l l r L r l l r L r l l r L r l l r L



R l r r l l R l r r l l R l r r l l R l r r l l R L r l l r r L r l l r r L r l l



r r L r l l r r L r l l r r L

Flamus Nondragginus

Murray Gusseck

3/4

1 R L R L R R L L R L R L R R L L

3 R L R R L R L L R R L L R L R L

5 R L R L R R L L R L R L R R L L

7 R L R R L R L L R R L L R L R L

9 R l r L L r l R R l r L L r l R R l r L L r l R R

11 L r l R R l r L L r l R R l r L r l R R l r L L

13 r R R r l L R L R R R L r r l l R l r r l l R l r r l l

15 R